

CANOPY INSTALLATION MANUAL

A-C748IA	CANOPY KIT, ALUMINUM TREAD PLATE
A-C748IB	CANOPY KIT, BLUE
A-C748IG	CANOPY KIT, GREEN
A-C748IO	CANOPY KIT, ORANGE
A-C748IR	CANOPY KIT, RED
A-C7482R	CANOPY KIT, DARK RED

INTRODUCTION

IMPORTANT: Read through this instruction manual thoroughly and familiarize yourself with the tractor before installing the canopy.

This instruction demonstrates procedures for installing an A&I Products canopy on open operator station tractors.

Recognize Safety Information

This is a safety-alert symbol. When you see this symbol on your machine or in this manual, be alert to the potential for personal injury.

Follow recommended precautions and safe operating procedures.



Understand Signal Words

A signal word - **DANGER**, **WARNING**, or **CAUTION** - is used with the safety alert symbol. **DANGER** identifies the most serious of hazards.

DANGER or **WARNING** signs are located near specific hazards. General precautions are listed on **CAUTION** safety signs.



DANGER



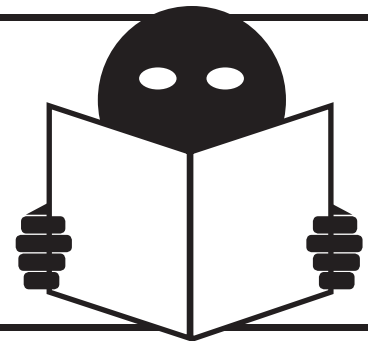
WARNING



CAUTION

Follow Safety Instructions

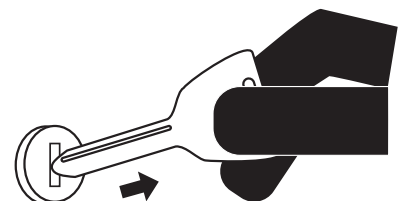
Carefully read all safety messages in this manual and in the tractor operators manuals for any instructions and safety messages. Do not let anyone install or use without proper instruction.



Park Machine Safely & Prepare Machine for Service

Before working on the machine:

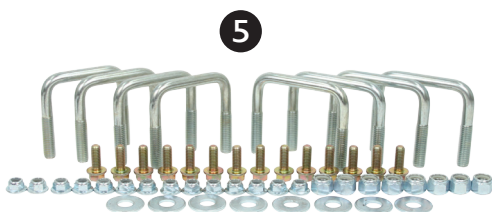
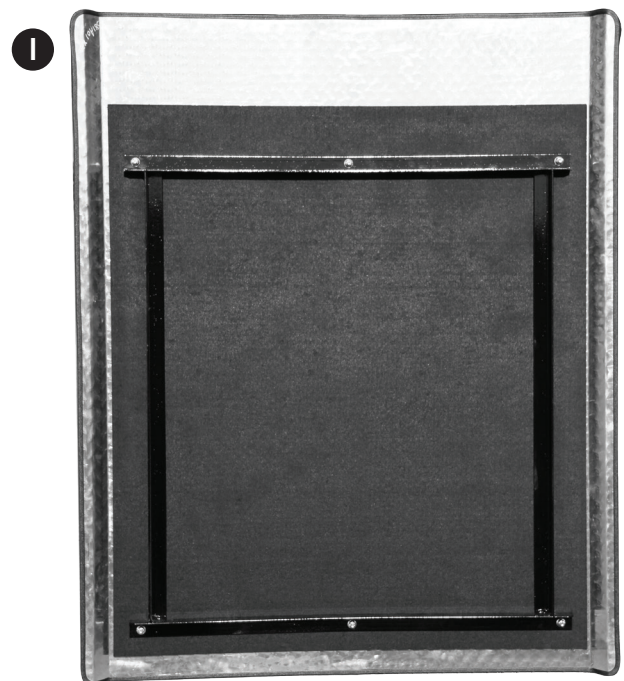
- Lower all equipment to the ground.
- Stop engine & remove key.
- Disconnect the battery ground strap.
- Hang “DO NOT OPERATE” tag in cab.



HARDWARE KIT COMPONENTS

Use this chart to identify individual component quantities used.

REF. #	PARTS LIST	DESCRIPTION	QUANTITY
1		Canopy	1
	A-C358BK	Canopy Bracket Kit	
2	A-C35820	Bottom Bracket	2
3	A-C35830	Side Mount Plate	2
4	A-C35850	Top Bracket	2
5	A-C35840	Hardware Kit	
		3/8" Lock Nut	16
		3/8" x 1" Bolt	16
		1/2" Washer	8
		1/2" Lock Nut	8
		U-Bolt 2.5" x 3"	4
		U-Bolt 3" x 3"	4



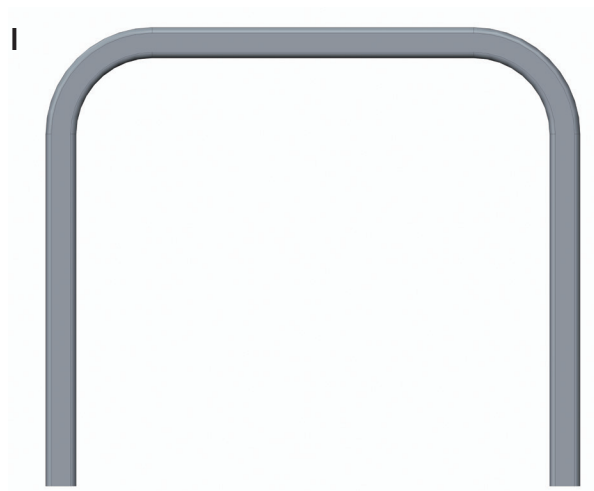
INSTALLATION PROCEDURES



Your A&I tractor canopy will fit Roll Over Protection Systems (ROPS) that are 27" to 40" in overall width with frames that are 2 1/2" - 3" in size. It is also designed to fit ROPS that are angled up to 33° forward or backwards.

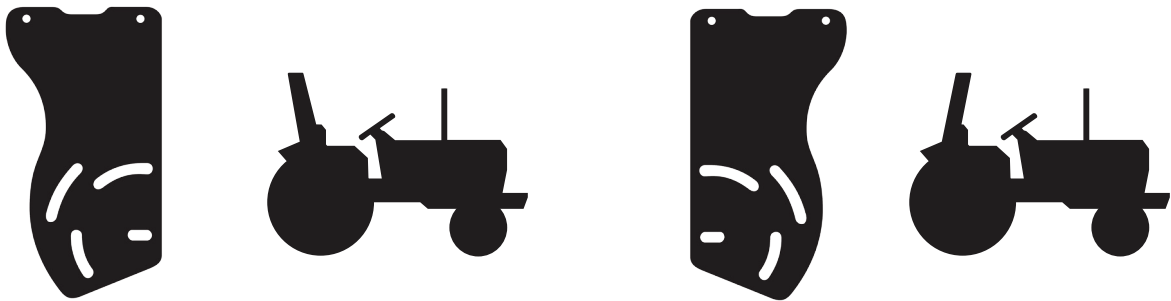
- I. Measure the overall width of the ROPS to determine the bracket configuration. If the width measures 35" then only the side mount plates are required, proceed to the **step 2**. If the width is greater or less than 35" move to **step 4**.

Fig. 1



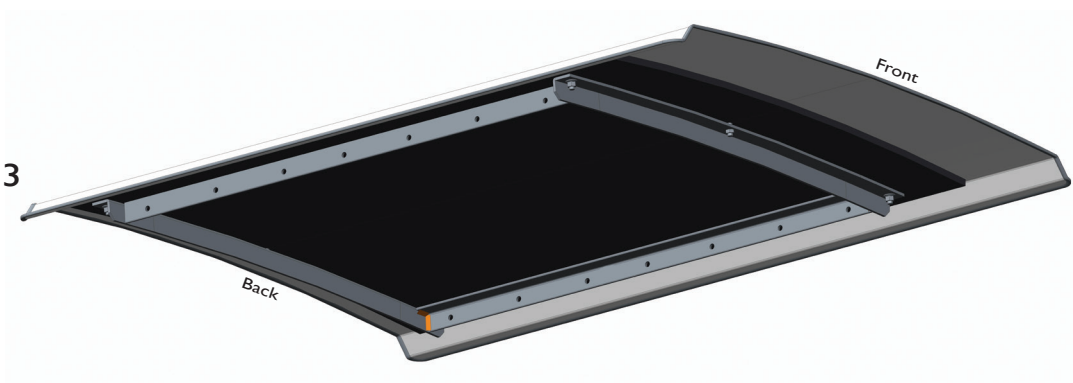
2. If the ROPS measured 35" the side mount plates will mount directly to the canopy frame. The side mount plates are reversible to accommodate forward and rear angled ROPS. The side mount plates are slotted, this will allow adjustment to level the canopy once installed. The orientation of the side mount plates are shown below (the curved edge will match the angle of the ROPS).

Fig. 2



3. The side mount plates will mount directly to the canopy frame with the (4) 3/8" bolts and (4) 3/8" nuts. There are multiple positions to attach the side plates to the frame, this is determined by the angle of the ROPS and personal preference. If the ROPS angles forward, use holes toward the center of the canopy frame. If the ROPS angles to the rear, use holes towards the rear of the canopy frame. These are recommended, but can be adjusted based on operator preference. After this step is complete move to **step 7**.

Fig. 3



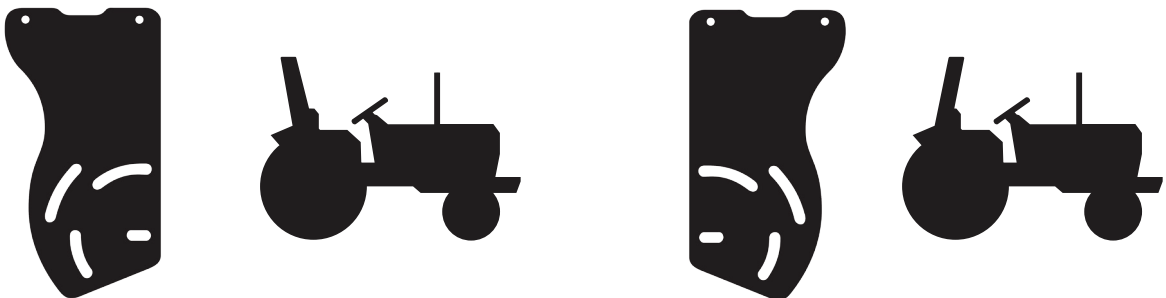
4. If the width of the ROPS is greater or less than 35" wide, the top and bottom brackets will be needed. These brackets will allow adjustment to fit ROPS that are 27" to 40" in width. Use (6) 3/8" bolts and (6) 3/8" nuts per bracket, two bolts and nuts are required for each slot. The orientation of the side mount plates will depend on the angle of the ROPS.

Fig. 4



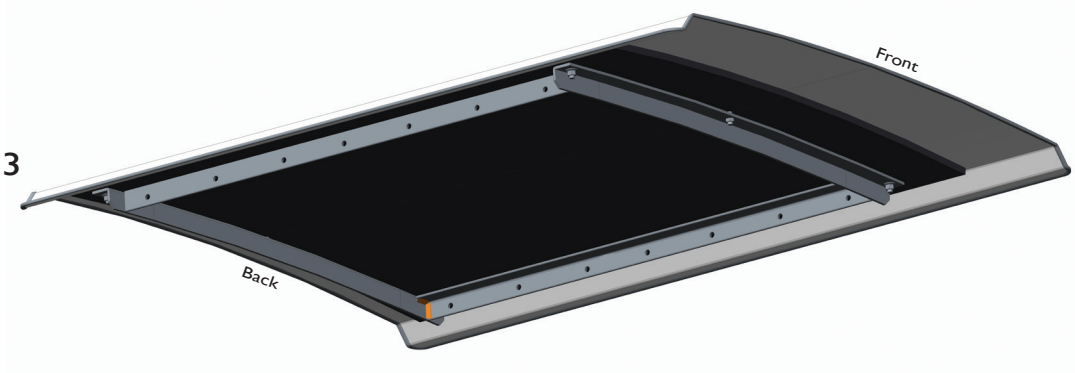
5. The side mount plates are reversible to accommodate forward and rear angled ROPS. The side mount plates are slotted, this will allow adjustment to level the canopy once installed. The orientation of the side mount plates is shown below (the curved edge will match the angle of the ROPS).

Fig. 2



- The top bracket will attach to the canopy frame using (4) 3/8" bolts. There are multiple positions to attach the brackets to the canopy frame, this is determined by the angle of the ROPS and personal preference. If the ROPS angles forward, use holes towards the center of the canopy frame. If the ROPS angles to the rear, use holes towards the rear of the canopy frame.

Fig. 3



- Mount the canopy assembly to the ROPS using (4) 1/2" u-bolts, (4) 1/2" washers, and (4) 1/2" lock nuts. Please note that your kit is provided with 2 different size u-bolts to accommodate 2 1/2" - 3" ROPS, use the best fitting for your application. Insert the u-bolts around the ROPS frame and into the side frames of the ROPS. Once all u-bolts are in place, level the ROPS and secure the nuts.

Fig. 5

